

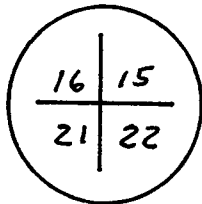
049154

RECEIVED  
LARAMIE COUNTY  
CHEYENNE, WY.

CERTIFIED LAND CORNER RECORDATION

'88 SEP 22 PM 3 32

T 14 N, R 68 W DESCRIPTION OF CORNER EVIDENCE FOUND, AND ORIGINAL RECORD (if known)

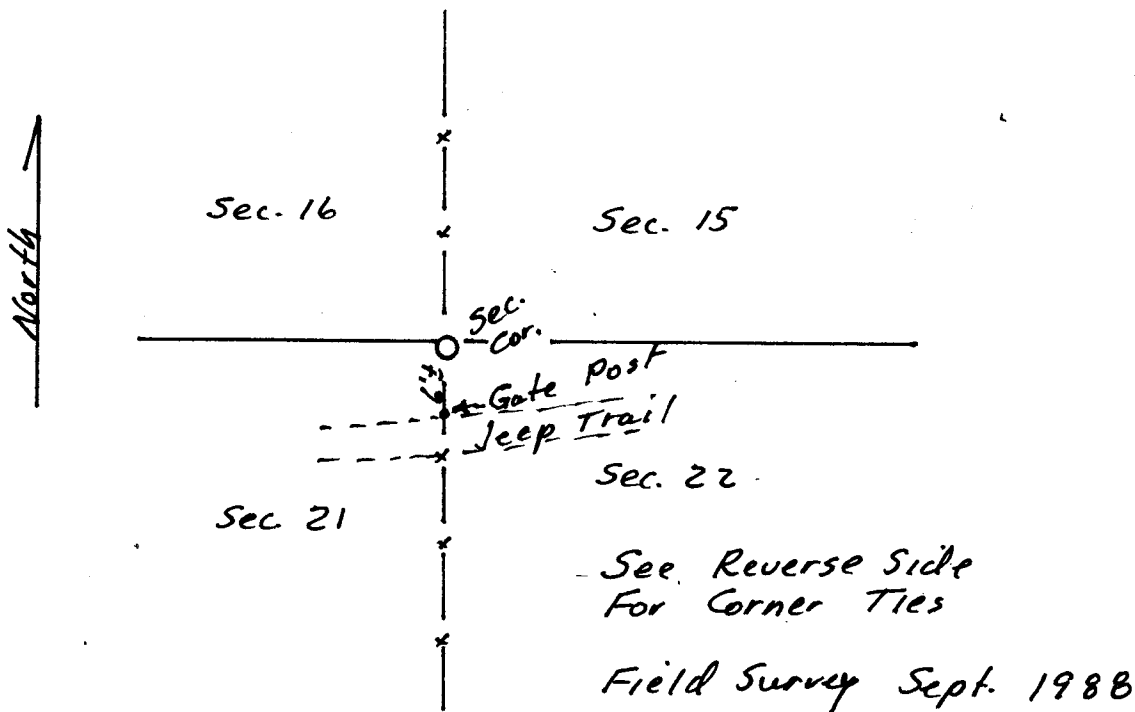


Found Granite Stone marked 3 marks on East side and 3 marks on southside set under North-South Fence. G.L.O. Record - Granite Boulder 18" x 14" x 12" (1870).

DESCRIPTION OF MONUMENT AND ACCESSORIES ESTABLISHED TO PERPETUATE THE ORIGINAL LOCATION OF THIS CORNER:

Removed stone and set 2" x 24" galvanized Iron pipe with Aluminum Cap marked with section corner numbers. Reset stone upside down at east side of pipe

SKETCH, WITH COURSE AND DISTANCE TO ADJACENT CORNER IF DETERMINED IN THIS SURVEY. (May Sketch or Paste Reproduction on Reverse Side.)



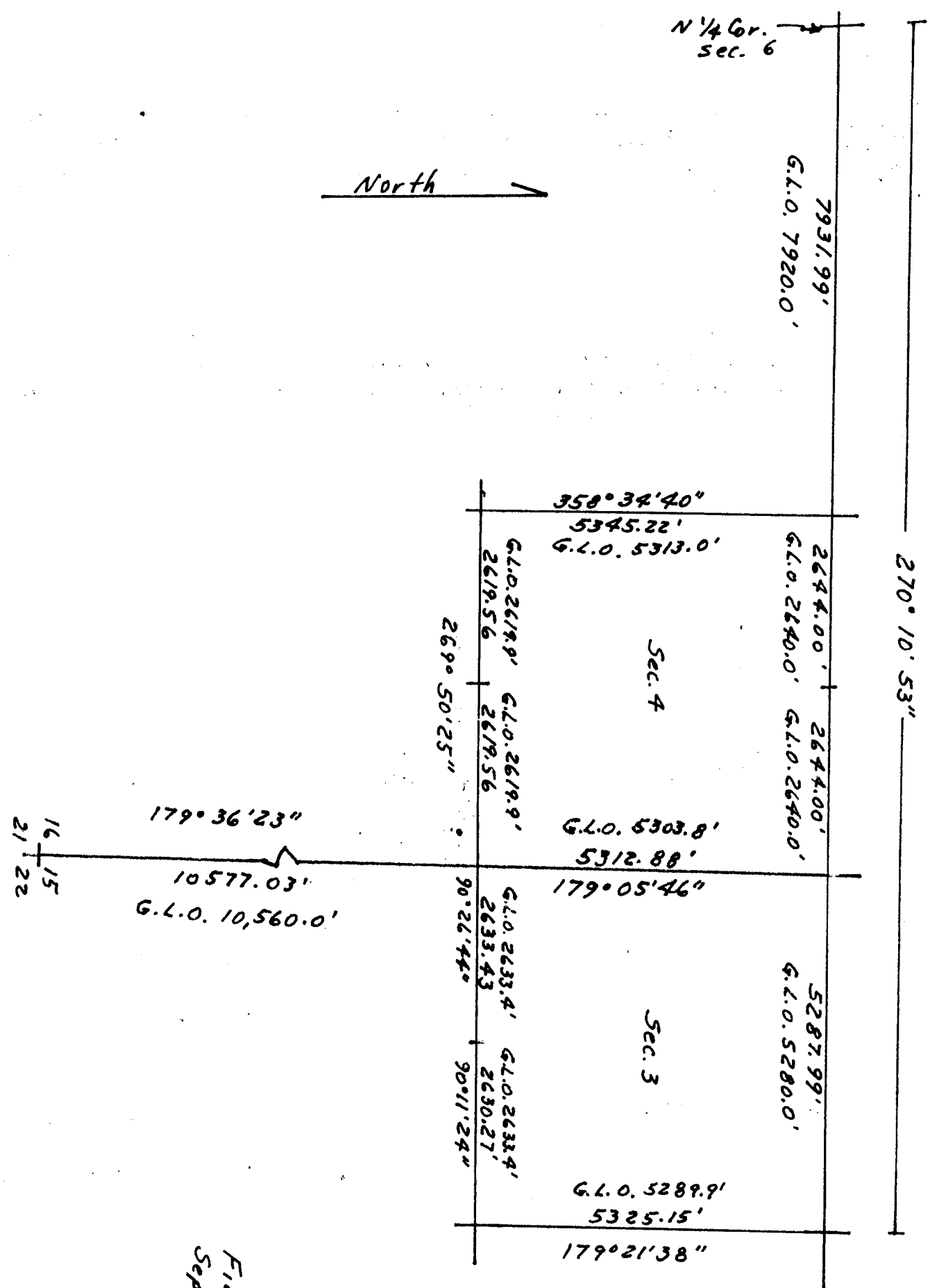
I, Edward C. Fry certify that I have carefully performed ~~or reviewed~~ the work done on the diagrammed corner as reported on this recordation form and approve the same.

Edward C. Fry PE/LS 662  
Signature of Surveyor Registration No.

STATE OF WYOMING,  
Office of Clerk and Recorder,  
County of Laramie

This "corner record" was filed for record on the 22 day of September, 1988, was noted on the cross-index plat and is assigned page No. 620, in book No. 1265.

Janet C. Whitehead  
County Official  
Cross Index No. \_\_\_\_\_ T. \_\_\_\_\_ R. \_\_\_\_\_ Mer.  
\_\_\_\_\_ T. \_\_\_\_\_ R. \_\_\_\_\_ Mer.  
\_\_\_\_\_ T. \_\_\_\_\_ R. \_\_\_\_\_ Mer.  
\_\_\_\_\_ T. \_\_\_\_\_ R. \_\_\_\_\_ Mer.  
\_\_\_\_\_ T. \_\_\_\_\_ R. \_\_\_\_\_ Mer.  
\_\_\_\_\_ T. \_\_\_\_\_ R. \_\_\_\_\_ Mer.  
\_\_\_\_\_ T. \_\_\_\_\_ R. \_\_\_\_\_ Mer.



N 1/4 Cor.  
Sec. 6

North

270° 10' 53"

16  
21  
15  
22

Field Survey  
Sept. 1988